



**LEGACY**  
**SPORTS**  

---

**INTERNATIONAL®**

***POINTER***

**INSTRUCTION MANUAL**  
**POINTER FT12 SEMI AUTO SHOTGUN**

**READ THE INSTRUCTIONS AND WARNINGS IN THIS MANUAL  
CAREFULLY BEFORE USING THIS FIREARM**

## STATEMENT OF LIABILITY

This Semi-auto Shotgun is classified as a firearm or dangerous weapon. It is expressly understood that we assume no liability for its resale or unsafe handling under local laws and regulations. Legacy Sports International assumes no responsibility for physical injury or property damage resulting from either intentional or accidental discharge, or for the function of the firearm subjected to influence beyond their control. Legacy Sports International will honor no claims which may result from careless handling, unauthorized adjustments, defective or improper ammunition, corrosion or neglect. Examine your firearm carefully at the time of purchase. It should be forwarded immediately to the factory or its sales agent if any adjustment of any kind is required.

## STATE BY STATE WARNINGS

### CALIFORNIA STATE WARNING

CHILDREN ARE ATTRACTED TO AND CAN OPERATE FIREARMS THAT CAN CAUSE SEVERE INJURIES OR DEATH. PREVENT CHILD ACCESS BY ALWAYS KEEPING FIREARM LOCK AWAY AND UNLOADED WHEN IN NOT USE. IF YOU KEEP A LOADED FIREARM WHERE A CHILD OBTAINS IMPROPERLY USES IT, YOU MAY BE FINED OR SENT TO PRISON. IT IS UNLAWFUL TO USE A MAGAZINE WITH A CAPACITY OVER 10 ROUNDS.

### MASSACUTHESS STATE WARNING

ITS UNLAWFUL TO CARRY ANY MAGAZINE OR BELT WHICH HOLDS MORE THAN TEN ROUNDS, UNLESS AUTHORITY IS GRANTED BY THE BOSTON POLICE COMMISSIONER. IT IS UNLAWFUL TO STORE OR KEEP A FIREARM, RIFLE, SHOTGUN OR MACHINE GUN IN ANY PLACE UNLESS THAT WEAPON IS EQUIPPED WITH A TAMPER RESISTANT SAFETY DEVICE OR IS STORED OR KEPT IN A SECURELY LOCKED CONTAINER

### NEW YORK STATE WARNING

IT IS UNLAWFUL TO CARRY ANY MAGAZINE OR BELT WHICH HOLDS MORE THAN SEVEN ROUNDS UNLESS AUTHORITY IS GRANTED BY THE STATE OF NEWYORK. THE USE OF A LOCKING DEVICE OR SAFETY LOCK IS ONLY ONE ASPECT OF RESPONSIBLE FIREARMS STORAGE FOR INCREASED SAFETY SAFETY, FIREARMS SHOULD BE STORED UNLOADED AND LOCKED IN A LOCATION THAT IS BOTH SEPARATED FROM THEIR AMMUNITION AND INACCESSABLE TO CHILDREN AND OTHER UNAUTHORIZED PERSONS.

Congratulations and thank you for choosing LEGACY semi automatic shotgun.

### WARNING!

Read very carefully this instruction manual before handling this shotgun. Incorrect handling may result in serious injury or death to you or bystanders.

Always keep this manual with your shotgun. Make sure you understand all the operation instructions, safety procedures and warnings in this manual before you handle the shotgun. If you sell, lend or give the shotgun to another, make sure this manual goes with it.

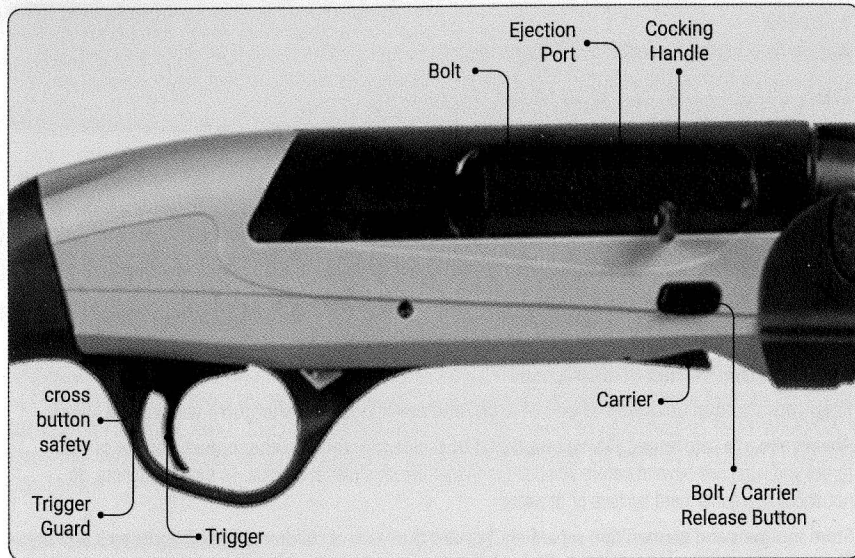
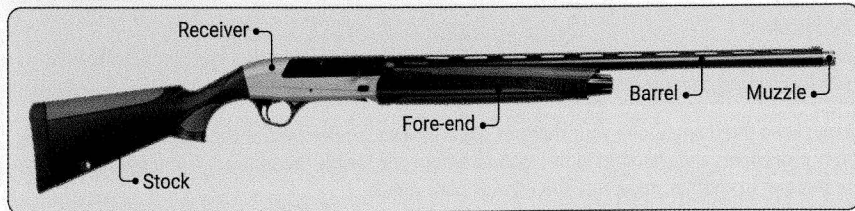
### WARNING!

Always keep your finger outside the trigger guard and be sure that the safety is fully engaged until you are ready to fire. The safety is fully engaged only when its red ring is completely covered and it can be moved no further toward the "on" position.

## SAFETY MEASURES

- Always point the shotgun in a safe direction even though it may be unloaded. Do not point the shotgun at anything you do not intend to shoot. Avoid all horseplay while handling a shotgun.
- Keep your finger away from the trigger when operating any other part of the shotgun's mechanism.
- Keep the safety "ON" until you are actually ready to fire. Treat every shotgun with respect and caution.
- Keep your fingers away from the muzzle. Never pull a shotgun toward you by the muzzle.
- Be sure the barrel is clear of obstructions.
- Keep your shotgun unloaded when not in use and never load your shotgun if you will not shoot.
- Always aim at a safe target, taking care that it does not conceal any other object. Be sure of your target and what lies beyond before you pull the trigger. Never shoot at sounds. To avoid ricochets, do not shoot at a flat or hard surface or at water.
- Store shotguns and ammunition separately, beyond the reach of children, better if under lock and key. Shotguns should always be unloaded when stored.
- Never carry a loaded shotgun inside a vehicle, house, camp, or public place. When transporting the shotgun keep the shotgun "on safe" and unloaded. Never climb a tree or fence, or jump a ditch with a loaded shotgun.
- Never rely on any one's words that the shotgun is "on safe" or unloaded. Always check to see if the shotgun is "on safe" and unloaded when getting it from another person or storage.
- Avoid alcoholic beverages or drugs before or during shooting.
- Always use eye & hearing protection and make sure bystanders are similarly protected.
- Although the shotgun itself does not contain any lead, it fires ammunition containing lead or lead compounds, which are known to be dangerous for health. When shooting or cleaning shotguns, take protective health measures. Avoid exposure to the lead while handling and wash your hands after contact. Proper air ventilation is absolutely necessary when shooting indoors.
- Any damage, malfunction, injury, or death resulting from the use of faulty, incorrect, non-standard, remanufactured, hand loaded or reloaded ammunition is the sole responsibility of the user.
- The user is solely responsible for the damage, injuries or death resulting from carelessness or misuse of the shotgun.

## NOMENCLATURE



## EXTERNAL CONTROL PARTS

("Right" and "Left" refer to the shotgun as seen by a shooter holding it in the firing position.)

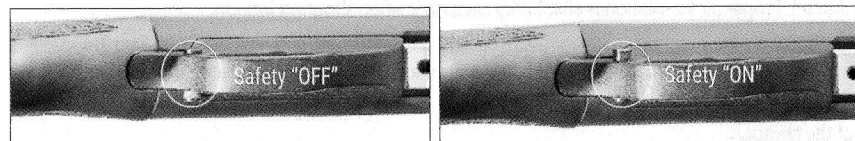
### Cross Button Safety:

It is located behind the trigger on the trigger housing.

When the red ring on its left side is visible, it means that the cross button safety is disengaged and shotgun is ready to fire.

To engage the cross button safety, push it fully to the right until its red ring disappears and it will move no further. The safety is now ON, blocking the trigger from being pulled.

To take the safety "OFF", push the button fully to the left, exposing its red ring. The trigger can now be pulled.



## WARNING!

1. Always keep the cross button safety "ON" until you are ready to fire and the muzzle is pointing at the target.
2. Make sure that you understand how all controls work before you attempt to load the shotgun.
3. Keep the muzzle pointed in a safe direction and your finger off the trigger when operating the safety. Malfunctions which may cause a shotgun to fire is engaged or disengaged are rare but can happen. Even if an accidental firing should occur, nobody will be hurt if you follow this rule.

## THREE THINGS TO REMEMBER ABOUT SAFETIES

**NEVER TOTALLY DEPEND ON A MECHANICAL SAFETY.** It is not a substitute for proper shotgun handling. Like all mechanical devices the safety is subject to breakage or malfunction and can be defeated by wear, abuse, dirt, corrosion, incorrect assembly of the shotgun, improper adjustment or repair, or lack of maintenance.

**4. NO MECHANICAL SAFETY IS "CHILDPROOF" OR "FOOLPROOF".** No safety ever invented can be relied upon to prevent an accidental shooting by a determined child or a grownup idiot "playing" with shotgun.

**5. TREAT EVERY SHOTGUN AS IF YOU EXPECT ITS MECHANICAL SAFETY NOT TO WORK.** You will be astounded at how cautious you become, and how little tolerance you will have for the complacency of others.

### Carrier

It is located under the receiver, in front of the trigger guard.

### Bolt / Carrier Release Button

It is located on the carrier.

When the bolt is locked open, depressing this button releases the bolt and carrier.

### Trigger

It is located in the trigger guard. With the safety "OFF" and a cartridge in the chamber, pulling the trigger fires the shotgun.

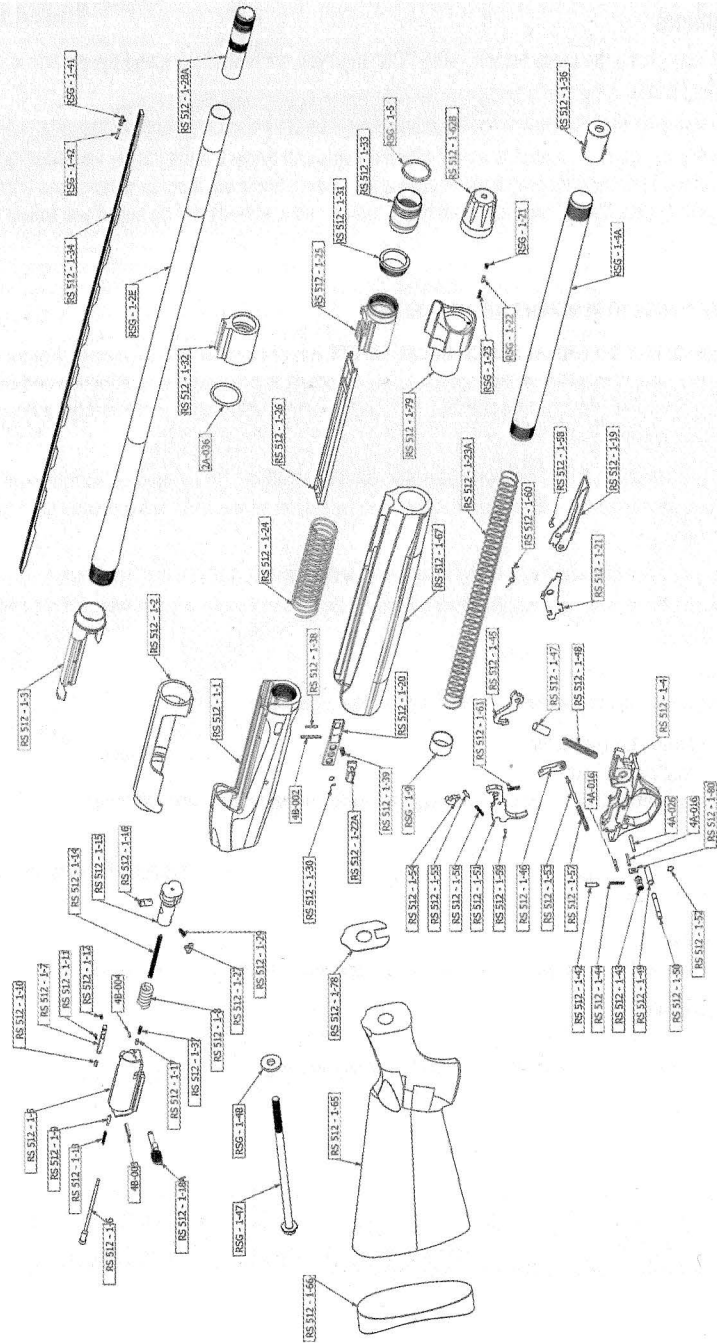
### Bolt Handle

It is located at the right side of the shotgun, protruding from the bolt. It is used for retracting the bolt.

### Magazine Cap

It is located at the end of the magazine tube, in front of the fore-end and under the barrel. It is screwed (clock-wise) on the magazine tube to keep the fore-end and barrel properly in their place.

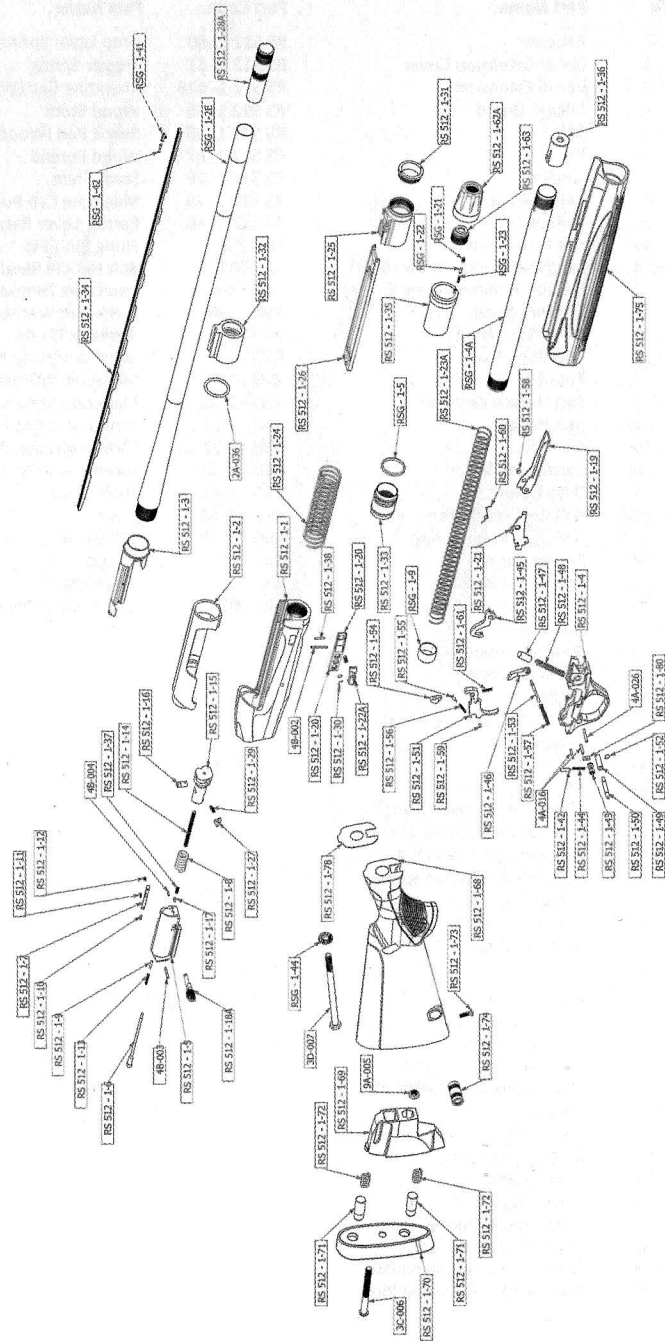
**EXPLODED VIEW WOOD**



Part Code	Part Name	Part Code	Part Name
RS 512 1- 1	Receiver	RS 512 1- 60	Drop Lever Spring
RS 512 1- 2	Barrel Extension Cover	RS 512 1- 61	Trigger Spring
RS 512 1- 3	Barrel Extension	RS 512 1- 62B	Magazine Cap (Wood)
RS 512 1- 4	Trigger Guard	RS 512 1- 65	Wood Stock
RS 512 1- 5	Bolt	RS 512 1- 66	Recoil Pad (Wood)
RS 512 1- 6	Firing Pin	RS 512 1- 67	Wood Forend
RS 512 1- 7	Ejector	RS 512 1- 78	Stock Shim
RS 512 1- 8	Helix Spring	RS 512 1- 79	Magazine Cap Bushing (Wood)
RS 512 1- 9	Ejector Pin	RS 512 1- 80	Carrier Lever Retaining Pin Latch
RS 512 1- 10	Ejector Retainer	4B - 003	Firing Pin's Pin
RS 512 1- 11	Ejector Retainer Screw (Rear)	4B - 004	Bolt Handle Retainer Spring's Pin
RS 512 1- 12	Ejector Retainer Screw (Front)	RSG - 1-47	Stock Bolt (Wood)
RS 512 1- 13	Ejector Spring	RSG - 1-48	Stock Bolt Washer (Wood)
RS 512 1- 14	Firing Pin Spring	2A - 036	Gas Hole O ring
RS 512 1- 15	Rotating Head	RSG - 1-5	Gas Piston Snap Ring
RS 512 1- 16	Rotating Head Pin	RSG - 1-9	Magazine follower (Short)
RS 512 1- 17	Bolt Handle Retainer	RSG - 1-4A	Magazine 5 round
RS 512 1- 18A	Bolt Handle	RSG - 1-21	Forend Bushing Bearing
RS 512 1- 19	Carrier	RSG - 1-22	Forend Bushing Bearing Pin
RS 512 1- 20	Carrier Latch	RSG - 1-23	Forend Bushing Bearing Spring
RS 512 1- 21	Drop Lever	RSG - 1-41	Front Sight
RS 512 1- 22A	Bolt Release Button	RSG - 1-42	Fiber
RS 512 1- 23A	5 rd. Magazine Spring	RSG - 1-2E	28" Barrel
RS 512 1- 24	Return Spring	4A - 026	Trigger Pin
RS 512 1- 25	Action Bar Bushing	4A - 016	Retaining Pin
RS 512 1- 26	Action Bar	4B - 002	Carrier Latch Pivot Pin
RS 512 1- 27	Extractor		
RS 512 1- 28A	90mm Extended Choke		
RS 512 1- 29	Extractor Spring		
RS 512 1- 30	Carrier Latch Snap Spring		
RS 512 1- 31	Action Bar Bushing Cover		
RS 512 1- 32	Gas Hole		
RS 512 1- 33	Gas Piston		
RS 512 1- 34	Rib		
RS 512 1- 36	Magazine Follower (Long)		
RS 512 1- 37	Bolt Handle Retainer (Spring)		
RS 512 1- 38	Bolt Release Button Pin		
RS 512 1- 39	Bolt Release Button Spring		
RS 512 1- 42	Safety Pin		
RS 512 1- 43	Safety		
RS 512 1- 44	Safety Spring		
RS 512 1- 45	Hammer		
RS 512 1- 46	Carrier Lever		
RS 512 1- 47	Hammer Capsule		
RS 512 1- 48	Hammer Spring		
RS 512 1- 49	Hammer Retaining Pin		
RS 512 1- 50	Trigger Guard Retaining Pin		
RS 512 1- 51	Trigger		
RS 512 1- 52	Snap Ring		
RS 512 1- 53	Carrier Lever Pin		
RS 512 1- 54	Inner Trigger		
RS 512 1- 55	Inner Trigger Pin		
RS 512 1- 56	Inner Trigger Spring		
RS 512 1- 57	Carrier Lever Spring		
RS 512 1- 58	Carrier Lever Retaining Pin		
RS 512 1- 59	Inner Trigger Retaining Pin		



**EXPLODED VIEW SYNTHETIC**



Part Code	Part Name	Part Code	Part Name
RS 512 1- 1	Receiver	RS 512 1- 71	CoREX Pin
RS 512 1- 2	Barrel Extension Cover	RS 512 1- 72	CoREX Spring
RS 512 1- 3	Barrel	RS 512 1- 73	CoREX Retaining Pin
RS 512 1- 4	Trigger Guard	RS 512 1- 74	QD sling for Synthetic Stock
RS 512 1- 5	Bolt	RS 512 1- 75	Synthetic Forend
RS 512 1- 6	Firing Pin	RS 512 1- 78	Stock Shim
RS 512 1- 7	Ejector	RS 512 1- 80	Carrier Lever Retaining Pin Latch
RS 512 1- 8	Helix Spring	4B - 003	Firing Pin's Pin
RS 512 1- 9	Ejector Pin	4B - 004	Bolt Handle Retainer Spring's Pin
RS 512 1- 10	Ejector Retainer	3D - 007	Stock Bolt
RS 512 1- 11	Ejector Retainer Screw (Rear)	RSG - 1-44	Stock Bolt Washer
RS 512 1- 12	Ejector Retainer Screw (Front)	3C - 006	CoREX Bolt
RS 512 1- 13	Ejector Spring	9A - 005	CoREX Bolt Nut
RS 512 1- 14	Firing Pin Spring	2A - 036	Gas Hole O ring
RS 512 1- 15	Rotating Head	RSG - 1-5	Gas Piston Snap Ring
RS 512 1- 16	Rotating Head Pin	RSG - 1-9	Magazine follower (Short)
RS 512 1- 17	Bolt Handle Retainer	RSG - 1-4A	Magazine 5 round
RS 512 1- 18A	Bolt Handle	RSG - 1-21	Forend Bushing Bearing
RS 512 1- 19	Carrier	RSG - 1-22	Forend Bushing Bearing Pin
RS 512 1- 20	Carrier Latch	RSG - 1-23	Forend Bushing Bearing Spring
RS 512 1- 21	Drop Lever	RSG - 1-41	Front Sight
RS 512 1- 22A	Bolt Release Button	RSG - 1-42	Fiber
RS 512 1- 23A	5 rd. Magazine Spring	RSG - 1-2E	28" Barrel
RS 512 1- 24	Return Spring	4A - 026	Trigger Pin
RS 512 1- 25	Action Bar Bushing	4A - 016	Retaining Pin
RS 512 1- 26	Action Bar	4B - 002	Carrier Latch Pivot Pin
RS 512 1- 27	Extractor		
RS 512 1- 28A	90mm Extended Choke		
RS 512 1- 29	Extractor Spring		
RS 512 1- 30	Carrier Latch Snap Spring		
RS 512 1- 31	Action Bar Bushing Cover		
RS 512 1- 32	Gas Hole		
RS 512 1- 33	Gas Piston		
RS 512 1- 34	Rib		
RS 512 1- 35	Magazine Cap Bushing		
RS 512 1- 36	Magazine Follower (Long)		
RS 512 1- 37	Bolt Handle Retainer (Spring)		
RS 512 1- 38	Bolt Release Button Pin		
RS 512 1- 39	Bolt Release Button Spring		
RS 512 1- 42	Safety Pin		
RS 512 1- 43	Safety		
RS 512 1- 44	Safety Spring		
RS 512 1- 45	Hammer		
RS 512 1- 46	Carrier Lever		
RS 512 1- 47	Hammer Capsule		
RS 512 1- 48	Hammer Spring		
RS 512 1- 49	Hammer Retaining Pin		
RS 512 1- 50	Trigger Guard Retaining Pin		
RS 512 1- 51	Trigger		
RS 512 1- 52	Snap Ring		
RS 512 1- 53	Carrier Lever Pin		
RS 512 1- 54	Inner Trigger		
RS 512 1- 55	Inner Trigger Pin		
RS 512 1- 56	Inner Trigger Spring		
RS 512 1- 57	Carrier Lever Spring		
RS 512 1- 58	Carrier Lever Retaining Pin		
RS 512 1- 59	Inner Trigger Retaining Pin		
RS 512 1- 60	Drop Lever Spring		
RS 512 1- 61	Trigger Spring		
RS 512 1- 62A	Magazine Cap (Synthetic)		
RS 512 1- 63	QD sling for Magazine Cap		
RS 512 1- 68	Synthetic Stock		
RS 512 1- 69	CoREX		
RS 512 1- 70	Recoil Pad (Synthetic)		

## ASSEMBLY INSTRUCTIONS

Your new semi auto shotgun is packed dismounted in its box, i.e. barrel is separated from the stockreceiver-fore-end assembly. To attach the barrel, first remove all parts from the nylon bags. Before proceeding with the assembly of the shotgun, carefully check the "Nomenclature" and read "Safety Measures" sections.

### WARNING!

Before assembling the barrel, check the barrel. Bore and cartridge chamber must be clean and there should be no obstructions in them. Look through the loading gate and assure that magazine tube and receiver are empty.

Assemble the barrel as follows:

- Unscrew (counter-clockwise) the fore-end cap. (1)
- Remove the fore-end from the magazine tube. (2)
- Insert the barrel extension into the receiver. While doing this be sure that the gas port ring is aligned with the magazine tube and the barrel extension seats between the bolt and the receiver. Continue to slide the barrel extension into the receiver; here gas port ring would slide over the magazine tube. Retract the bolt backwards by means of bolt cocking handle until it is locked at the rear. Then completely insert the barrel extension into the receiver. (3)
- Slide the fore-end over the magazine tube until it completely seats around the barrel-receiver magazine tube assembly and until fore-end cap threaded post protrudes. (4) and (5)
- Depress the trigger to lower the hammer.

### WARNING!

- IF
  1. Bolt does not slide forward
  2. There is a gap between the fore-end and receiver
  3. Barrel extension protrudes from the receiver that means you have not assembled the shotgun properly. In such a case, immediately reverse assembly procedures and re-assemble your shotgun making sure that the barrel is completely inserted into the receiver, fore-end is completely in place and there are no gaps. If you still cannot assemble the shotgun properly take it to a qualified shotgunsmith for help.

\*\*After you assembled your shotgun or if you are taking it to a gunsmith for help, make sure that you keep the safety "ON".

## LOADING THE SHOTGUN

### WARNING!

- Always keep your fingers away from the trigger if you do not intend to fire.
- Always check cartridge chamber, magazine tube and receiver to see that the shotgun is not already loaded.
- While you load the shotgun, always point the barrel in a safe direction.
- Always use the correct ammo size, which your shotgun is chambered.
- Always keep the safety "ON" while loading your shotgun.

### Load the shotgun as follows:

- Point the muzzle in a safe direction!
- Put the safety "ON" if it is disengaged.
- Retract the bolt by means of cocking handle until it is locked at the rear.
- Insert through the ejection port the first round into the cartridge chamber.
- Keeping fingers away from the ejection port and the path of the bolt cocking handle depress the bolt/carrier release button, so the bolt snaps closed and is locked at the front.
- Turn the shotgun upside down so that the carrier is facing up. By depressing the bolt/carrier release button with the shot shells, insert up to 5 cartridges (if the magazine extension assembled up to 7 cartridges and if the magazine plug assembled up to 2) into the magazine tube until the last cartridge engages the stop tooth.

### WARNING!

Shotgun is now loaded and ready to be fired.

## FIRING THE SHOTGUN

### WARNING!

- When firing, keep your fingers and other objects away from the path of the bolt and the bolt cocking handle since they move backward and forward with considerable force and velocity.
- Keep the safety "ON" and your finger outside the trigger guard until you are actually ready to fire and aimed at your intended target.
- Bolt will remain open (locked to the rear) after the last round is fired, but never rely on this. Always check with your eyes to verify no cartridge is left in the chamber and magazine.
- Your semi auto shotgun, like other semi auto shotguns, feed the next round from the magazine tube into the cartridge chamber each time you fire. Since no mechanical force is necessary to fire another round after the previous one is ejected, always be aware that the shotgun is ready to fire as long as it is loaded.

### Fire with your shotgun as follows;

- Wear eye and ear protection.
- Engage safety and load your shotgun. (see Loading section)
- Point the barrel at your intended target.
- Disengage safety and take aim.
- Press the trigger.

### USE OF THE "CHOKES"

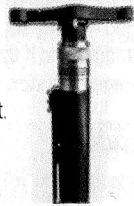
Shotgun choke is a constriction in the end of a shotgun barrel which focuses the shot into a tighter stream—much like a nozzle on the end of a water hose, which does exactly the same thing for exactly the same reason.

#### WARNING!

- Make sure the shotgun is unloaded and the safety "ON" before you assemble/disassemble the chokes.
- Under safety conditions (cartridge chamber empty, receiver empty, magazine tube empty, safety engaged), check whether the choke worked loose during use. In such a case, the choke must be tightened to the end by means of the choke wrench.

### Assembly & disassembly of the chokes:

- Take one of the chokes of your choice. Place it inside barrel and by means of choke wrench; screw (clockwise) it to the end until it is completely tightened.
- To disassemble, unscrew (counter-clockwise) by means of choke wrench and remove it.



## UNLOADING

#### WARNING!

Keep your fingers off the trigger and keep the safety "ON".

### Unload your shotgun as follows;

- Point the shotgun in a safe direction and engage the safety.
- Retract the bolt handle until the live round in the chamber is ejected
- Repeat this process until no more rounds are ejected from the magazine tube.
- When no more rounds are ejected from the magazine tube, visually check to assure the magazine tube and receiver are empty, and retract the bolt enough to see and make sure that the cartridge chamber is empty.
- Disengage safety and pointing the shotgun in safe direction (even though it may be unloaded), depress the trigger to lower the hammer.

## DISASSEMBLY INSTRUCTIONS

#### WARNING!

Before disassembling the shotgun, always make sure that the shotgun is not loaded, barrel is pointed in a safe direction and safety "ON".

### Disassemble the shotgun as follows:

- With the bolt in the forward position unscrew (counter-clockwise) the magazine cap. Remove the magazine cap from the magazine tube. (6)
- With your fingers compress the bolt to align the two notches on the bolt where the cocking handle is attached. Then with your other hand pull the bolt cocking handle and remove it from the bolt.  
\*\* Bolt cocking handle is secret coded to prevent falling risk of it.
- Slide the bolt and the action bar forwards and remove them from the magazine tube-receiver assembly. While doing this be careful since the bolt may fall from the action bar. Therefore keep the bolt up during this operation.

**NOTE:** To reassemble the shotgun, reverse the above disassembly procedures.

### USE OF THE "STOCK DROP SPACERS"

Stock drop spacer gives you the possibility of having desired slope of the stock.

There are 4 stock drop spacers (shims) packed with your gun and 1 (zero) is installed between stock and receiver

**It is recommended to have your stock drop spacer(s) assembled by a qualified gunsmith.**

#### WARNING!

Before assembling the stock drop spacer(s), always make sure the shotgun is unloaded and the safety is engaged.

### Assembly & disassembly of the stock drop spacer(s):

- Unscrew (counter-clockwise) the butt plate screws, and remove the recoil pad.
- Turn (counter-clockwise) the nut in the hole in which the stock connecting rod extends by means of a box spanner, and remove the stock connecting nut, spring washer and the washer. Then, remove the stock from the stock connection rod.
- Assemble the stock drop spacer(s) and put the stock over the stock connection rod.
- Assemble back the stock connecting nut, spring washer and the washer.
- Screw (clockwise) the butt plate screws to the end until the stock completely seats in its place.
- To disassemble the stock drop spacer(s), reverse the assembly process.



## CARE, CLEANING AND LUBRICATION

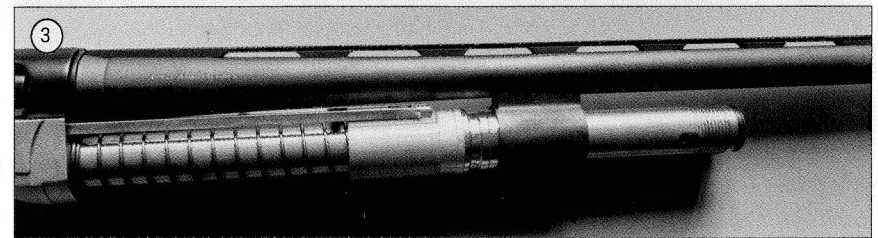
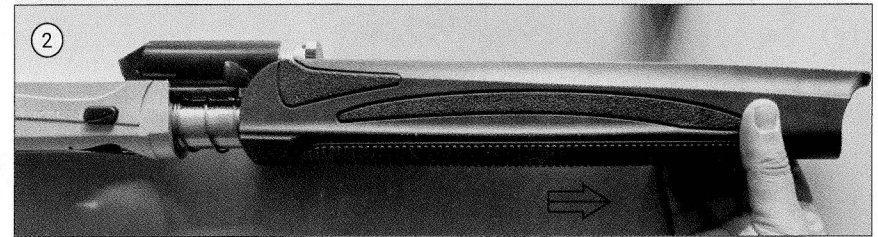
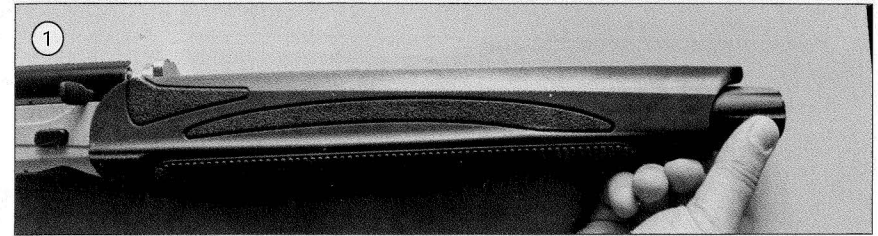
### WARNING!

Before cleaning or lubricating the shotgun make sure it is unloaded and the safety "ON".

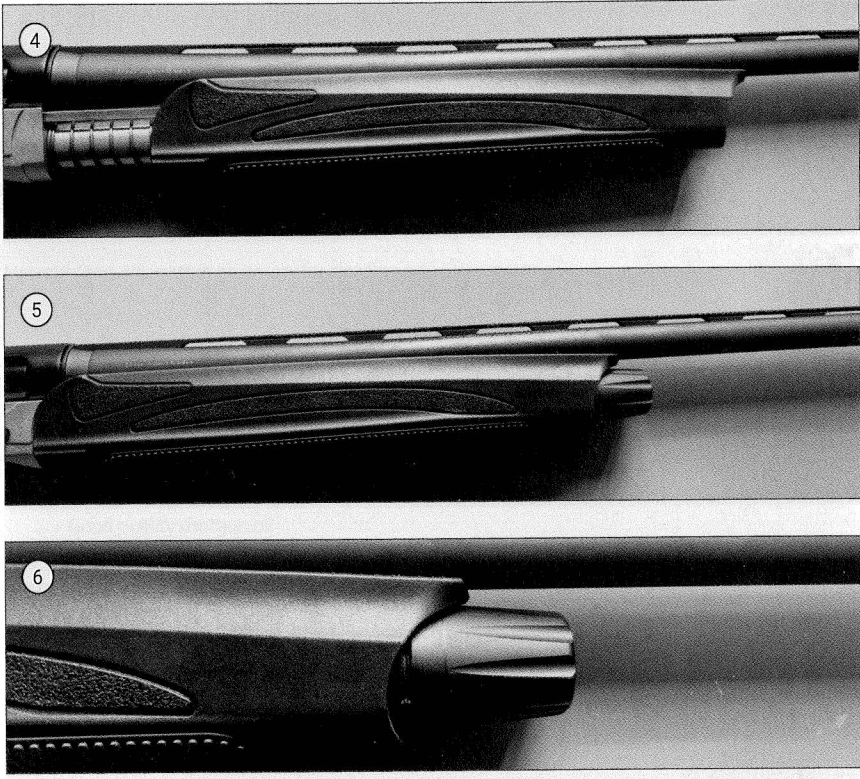
It is recommended to disassemble the shotgun to clean and to lubricate it when grease or dirt particles accumulate and combustion residues. To have the best resistance against corrosion, it is necessary to clean and lubricate the shotgun after each use, especially after use in wet and saline environment.

Materials and equipment necessary for cleaning and lubrication;

- Cleaning rod
  - Cotton bore patches
  - Brass bore brush
  - Powder solvent
  - Small soft brush
  - Good quality shotgun oil
- After use, to remove any powder and lead residue in the bore, scrub the barrel and chamber using the bore brush with powder solvent. Then do not forget to swab the bore and the chamber with shotgun oiled cotton patches to protect from rust and corrosion.
  - At the end of the hunting season or after a high number of shots (about 500 shots), disassemble the bolt assembly and clean it with a soft brush and shotgun oil. Then dry it carefully with a soft cloth and oil the parts lightly.
  - Take care of the trigger assembly as it is described for the bolt assembly.
  - Clean the outside of the magazine tube with a shotgun oiled soft cloth and then dry it with a soft cloth and oil the parts lightly.
  - Any powder on the firing wall, barrel, etc. can be cleaned with a brush and powder solvent.
  - All external surfaces should be wiped down with light coat of rust preventative.
  - Avoid using too much solvent for bore cleaning, since prolonged or excess contact can damage the finish of the wood. Make sure to wipe away all the excess solvent and lubricant.
  - After use, check the gas piston whether it slides freely inside the gas cylinder. Gas piston should be cleaned and very lightly oiled after each use. The two holes in the gas cylinder should be kept clear and open at all times to remain the shotgun functioning properly. Clean inside of the gas cylinder if necessary.
  - Check the rubber 'O' ring for cracks, splits, etc. and replace it with a new one if necessary.







# POINTER

## 7 YEAR WARRANTY

**Our Pointer firearms have a 7 Year Warranty for 'Manufacture Defects Only'.** Owners must register their firearm within **30 days of purchase** to receive this Warranty Coverage. The Warranty does NOT extend to any obvious abuse, misuse of the firearm or if the firearm is used for any other purpose other than hunting, competition or sporting situations. To register your firearm: Scan the QR Code or visit our website, scroll to the bottom of the page to "Resources" then select "Firearm Registration". Please provide all information required as well as attaching your proof of purchase. **Proof of purchase is required. Please visit legacysports.com/firearm-registration to register online or if you would like to send us your registration by mail, fill out this card and provide a copy of your proof of purchase.**

NAME: \_\_\_\_\_

PHONE NUMBER: \_\_\_\_\_

ADDRESS: \_\_\_\_\_

CITY: \_\_\_\_\_ STATE/ZIP: \_\_\_\_\_

EMAIL: \_\_\_\_\_

MODEL: \_\_\_\_\_

SERIAL #: \_\_\_\_\_

DATE OF PURCHASE: \_\_\_\_\_

PLACE OF PURCHASE: \_\_\_\_\_



LINK FOR LINK



4674 Aircenter Circle  
 Reno, NV 89502  
 Toll Free: 1-800-553-4229

PLEASE NOTE: If you do not send your proof of purchase, we cannot honor our warranty

**LEGACY  
SPORTS**

**INTERNATIONAL®**

PLEASE SEND A PROOF OF PURCHASE  
WITH THIS CARD IN ORDER TO RECEIVE  
THE POINTER WARRANTY

**LEGACY**  
**SPORTS**  

---

**INTERNATIONAL®**

Legacy Sports International  
4674 Aircenter Circle  
Reno NV 89502  
United States  
(775) 828-0555  
[www.legacysports.com](http://www.legacysports.com)

